

COMMENT thinkpink NE LAISSE AUCUNE CHANCE AU CANCER DU SEIN ?

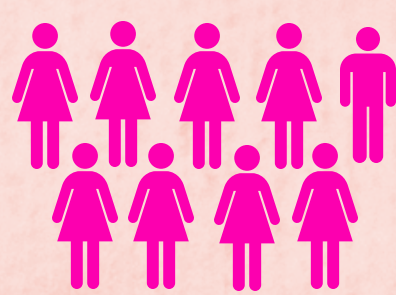
° 2007



2017 = 10!



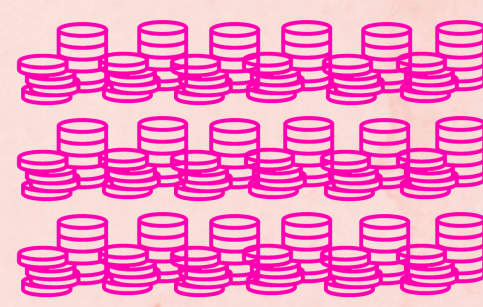
EMPLOYÉS



2016: 7,5 FTE

- + 300 bénévoles
- + 60 partenaires

RESSOURCES



€ 60 000

€ 1 300 000

2016: € 736 770*

* attestation fiscale à partir de 40 €

DONS

+

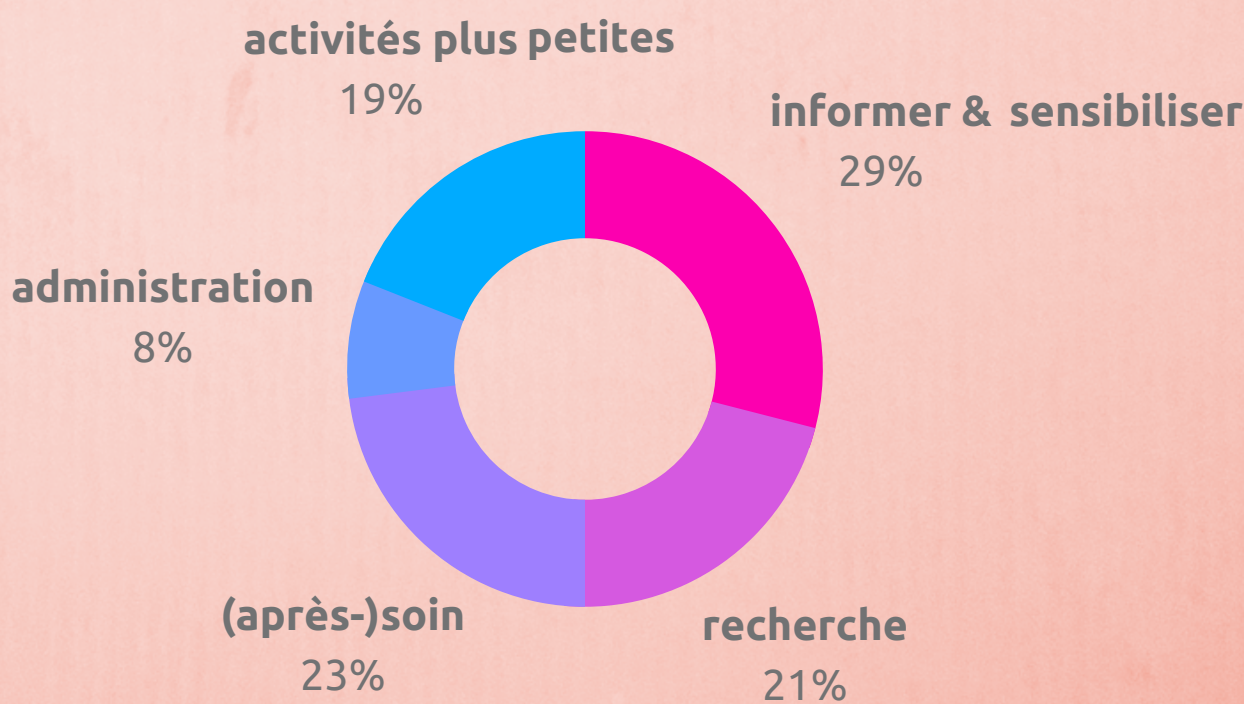
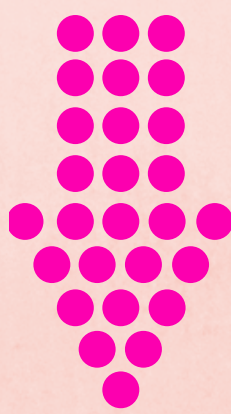
GADGETS

+

ACTIONS

+

EVENTS



thinkpink